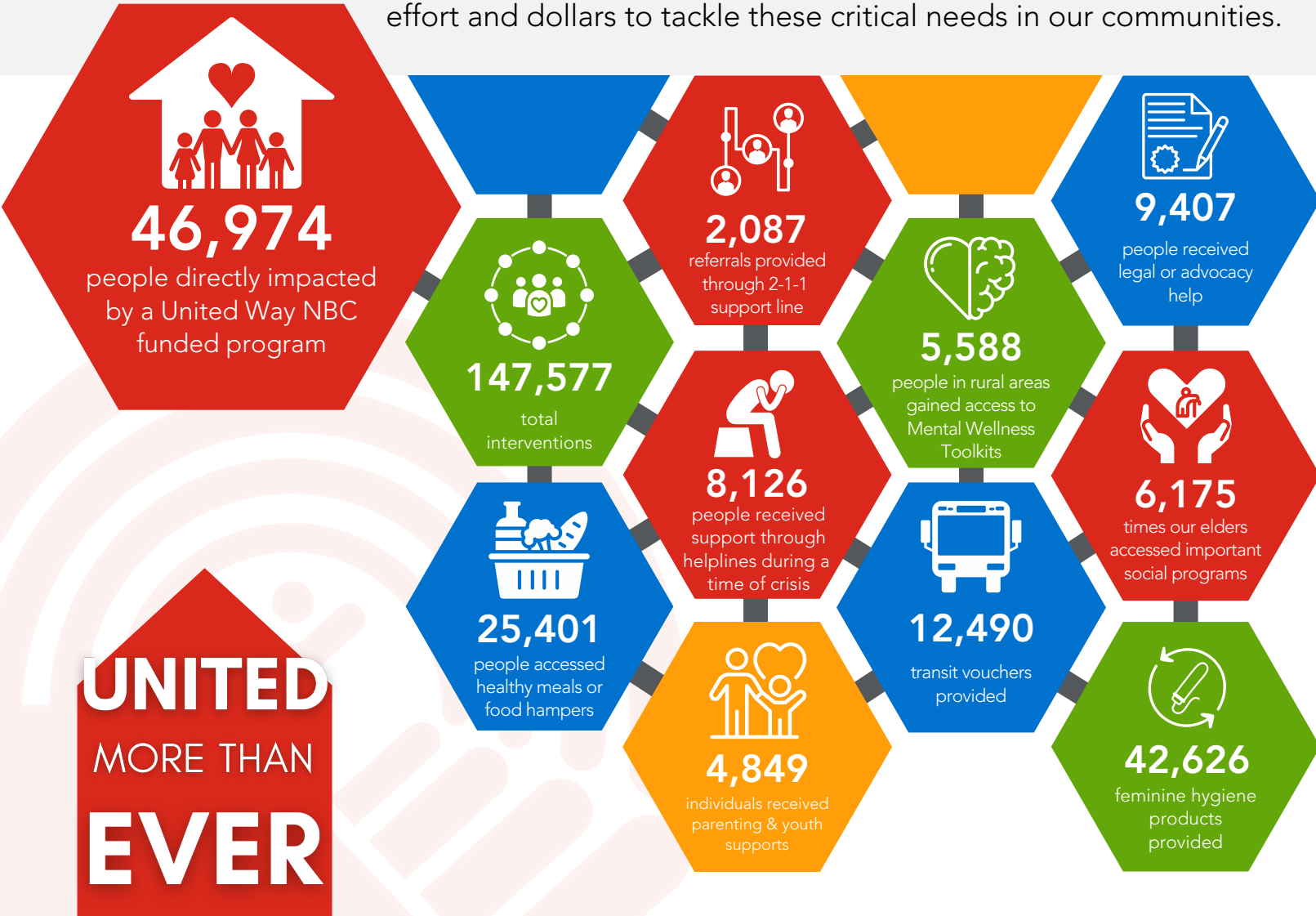




# Our Impact in 2021-2022

Through our long history, vast network and key research, United Way of Northern BC identifies the #unignorable issues of Northern BC. Your generosity enables us to invest time, effort and dollars to tackle these critical needs in our communities.



**UNITED  
MORE THAN  
EVER**

## BIGGER IMPACT FOR YOUR DOLLAR!

Not only do we provide funding for those who need it most, we support our communities in many other ways:

- Advocating the unique needs of our Northern BC communities
- Empowering other non-profit agencies
- Getting involved at community tables and events
- Supporting others through United Way programs



**United Way  
Northern BC**

For more information, log on to our website at [www.unitedwaynbc.ca](http://www.unitedwaynbc.ca) or call us at 250-561-1040, or 1-844-460-1040 (toll free)

Find us on:



# Local Impact

## Agencies in Moberly Lake empowered by the United Way

- bc211
- Cree-ative Wonder's Childcare Centre
- Crisis Prevention Intervention & Information Centre for Northern BC
- Northern Brain Injury Association
- Stigma-Free Society
- Stroke Recovery Association of BC
- West Moberly First Nations

United Way Northern BC is a charity dedicated to creating opportunities for a better life for everyone in our region. Behind every changed life is someone who made it happen.

Thank you for your continuous support!

**Local People**



**Local Impact**



**#locallove**

For more information on the local community impact please visit  
[unitedwaybc.ca/community-impact](http://unitedwaybc.ca/community-impact)